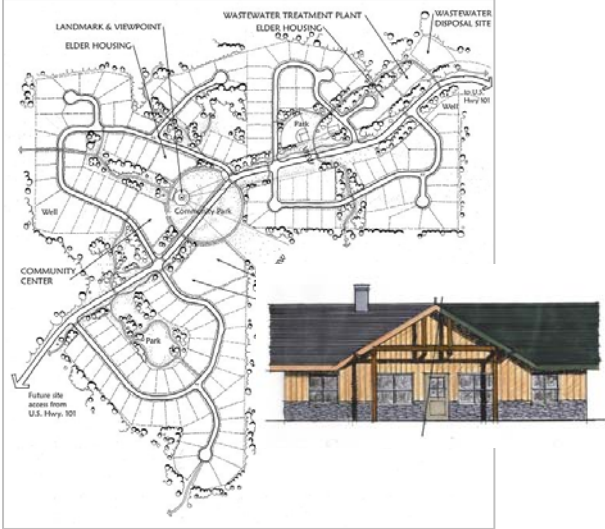
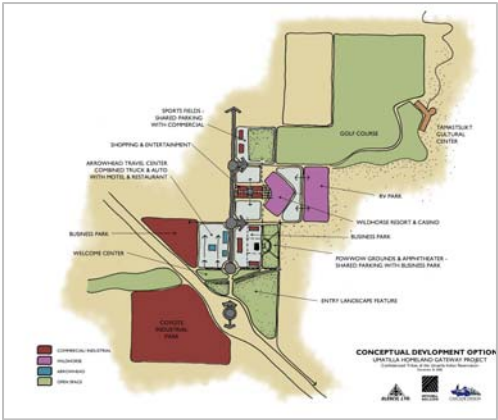
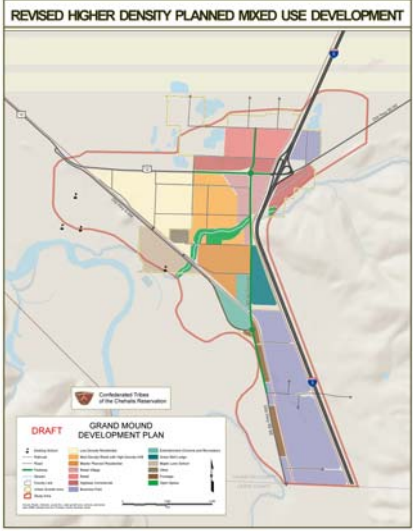


# Land Use Planning



*New Community Development Plan and teba'das Housing, Skokomish Reservation, Shelton, Washington; Skokomish Tribe*

*Grand Mound Development Plan Confederated Tribes of the Chehalis Reservation*



*Umatilla Homeland Gateway Project, Umatilla Indian Reservation, Umatilla, Oregon*

## Land Use Planning Projects

- *Land Use and Development Plan, Pine Nut, Nevada; Bureau of Indian Affairs, Western Regional Office*
- *Site Feasibility Analysis, Confederated Tribes of the Coos, Lower Umpqua & Siuslaw Indians*
- *Feasibility Analysis, Trail of the Coeur d'Alenes Interpretive Center, Plummer, Idaho; The Coeur d'Alene Tribe*
- *Site Master Plan, Coos Bay, Oregon; Coquille Indian Tribe*
- *Cultural Center Feasibility Study, Quinault Reservation, Taholah, Washington*
- *Grand Ronde Reservation Plan, Confederated Tribes of the Grand Ronde Community, Oregon*
- *Mooretown Rancheria Land Use Plan, Oroville, California*
- *Site Suitability Analysis, Smith River Rancheria, California*
- *Wisconsin Avenue Master Plan, Coquille Indian Tribe, Coos Bay, Oregon*
- *Omak Industrial Park, Omak, Washington; Mitchell Nelson Group, LLC for Confederated Tribes of the Colville Reservation*



*Sail River Heights Master Plan, Makah Nation, Neah Bay, Washington*